



KSJ Fortnightly Flyer

Dear Parents/Carers,

Happy Easter to all our KSJ families. We hope you have a wonderful Easter Bank Holiday weekend and then 2 week break following it. Hopefully the weather will settle down and brighten up a bit too. Pupil progress across this Spring Term has been really strong and our pupil voice opportunities have been strengthened. It is lovely to hear their ideas and values being shared so confidently.

Our Christian Distinctiveness

This half term, our worship theme has been Compassion. As a school, we have strengthened our mission to be 'children of light' through showing and understanding compassion through Jesus' example in the Bible. Next half term, our focus will be Creation and Endurance.



Our Curriculum

Our key questions to explore and investigate next term are:-

Class 1: **Why can't we see a dinosaur in the zoo?**

Class 2: **Why are Explorers important?**

Class 3: **What is the impact of Anglo Saxon settlement on Britain?**

Class 4: **Who are the few? Why was the Battle of Britain so important?**

Aspirations Afternoon

Thank you to Sharon and Sarah who visited school, put their nerves to one side and taught our children about their roles in the NHS.

There were some inspiring activities that helped us to understand their career choices.

Their attendance is greatly appreciated.

Courageous Advocacy

Our children at KSJ have always be strong agents for change in the world around them. We would like to begin collecting examples of this. If your child takes any decisions to make a difference to their locality, nation or in a global effort, please send your nominations for an award to recognise them as a 'Child of Light.'

Keep up to date...

Remember, you can see lots of fabulous learning on our Twitter (X) and Facebook sites.

<https://twitter.com/ksjceaied>

[Facebook.com/kingsleystjohns](https://facebook.com/kingsleystjohns)

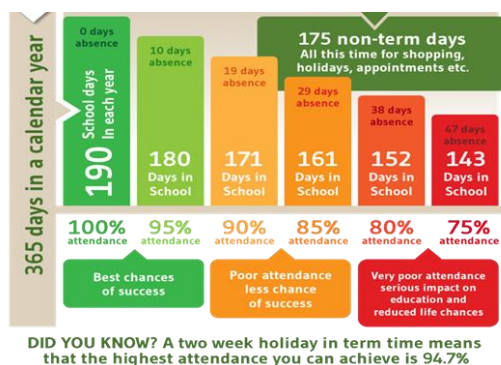
Check out our updated [SEND page](#) on the whole website. There are lots of supportive links as you scroll down the page.

Mrs Armstrong and Mrs Gibson have created a [Padlet](#) with lots of information and support for social, emotional and mental health development. Please do check it out and let us know how you find it.

<https://en-gb.padlet.com/senco89/semh-support-ov0m0bzhwz2dlyk1>

Attendance

Our whole school attendance from September to March is currently 89.7%. Nationally, the figure is 93%. Our persistent absence rate is 20.3%. These remain very high. Hopefully, the summer term will be a healthier one and our attendance figures will look stronger.



Thank you for your ongoing support – it is greatly appreciated and only in working together do your children flourish.



Cross Country

How amazing were our key stage 2 pupils at the cross country! Their courage, determination, support for others was recognised by many adults. I would like to thank all of the children who supported those taking part for the first time and those who took their time and thought to look after and check on others, especially those who were injured.



Lumii

Following a really positive trial of a mental health support APP called Lumii, we have decided to continue accessing the app. For some of our children it has been a vital support strategy. We will have a whole school Lumii week in the middle of May, we will also have access for a small number of pupils to access it daily. This will support our ELSA work that takes place.

KSJ will also be the first Ambassador school for the Lumii APP.

School Staff Development

Mrs Jones has successfully completed the training and is now confirmed as a SIAMs inspector. This will support school with an income to the school budget following 3 inspections per year. These will begin in September.

Mrs Gibson will be the named SENCo for Kingsley, Crowton and Norley from September. She will continue to be based at Kingsley, but will spend time each week supporting our local schools with their SEND practice. This will be built into her timetable from September.

Following Mrs Cowell's illness, her leadership roles will be shared with current staff as follows...

RE lead – Mrs Gibson

Collective Worship Lead – Miss Byrne

Science Lead – Mrs Heald

Kick

After Easter we will begin a partnership with 'Kick'. This is a company that combines quality PE with Christian Mentorship. We will have a dedicated coach on Tuesdays from 23rd April. The morning session will include mentor sessions for identified individuals and the afternoon will be high quality PE session for Falcons. There will be an after-school club (KS2) and a lunch time sporting activity for the children.

A second club for KS1 pupils will be run by pupils in school, with Miss Byrne overseeing. Dates TBC





The Jelly Bean Prayer

Red is for the Blood He gave.
 Green is for the grass He made.
 Yellow is for the sun so bright.
 Orange is for the edge of night.
 Black is for the sins we made.
 White is for the grace He gave.
 Purple is for the hour of sorrow.
 Pink is for our new tomorrow.

An egg full of jellybeans,
 colorful and sweet
 is a prayer, a promise,
 a loved one's treat.

NaturalBeachLiving.com